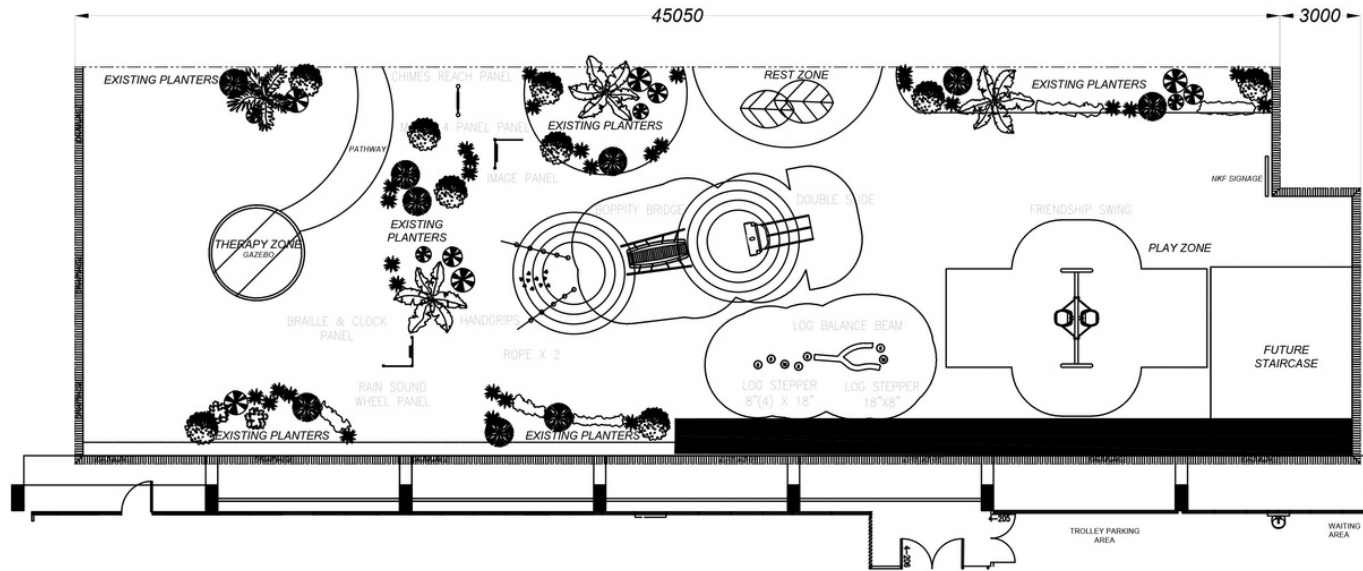


PERSPECTIVE VIEW 1

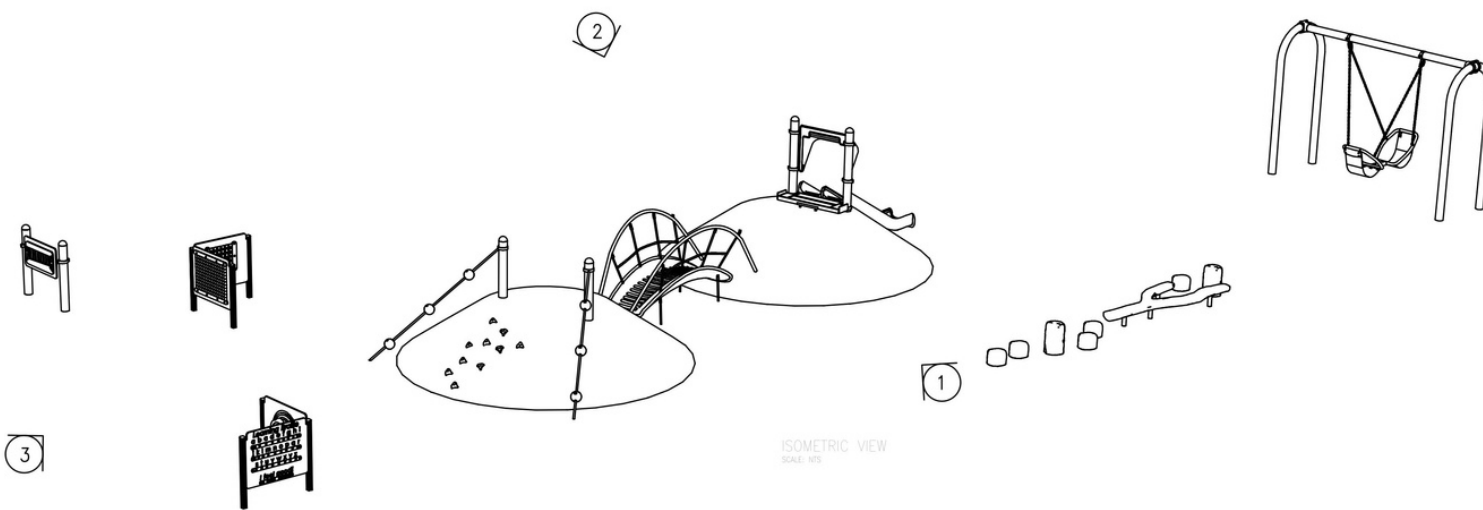


PERSPECTIVE VIEW 2





A PLAN VIEW
SCALE: 1:200



ISOMETRIC VIEW
SCALE: 1:50



63 JALAN PEMIMPIN
#02-04 PEMIMPIN INDUSTRIAL BUILDING
SINGAPORE 577219
TEL: (65) 6254 2910 FAX: (65) 62542913

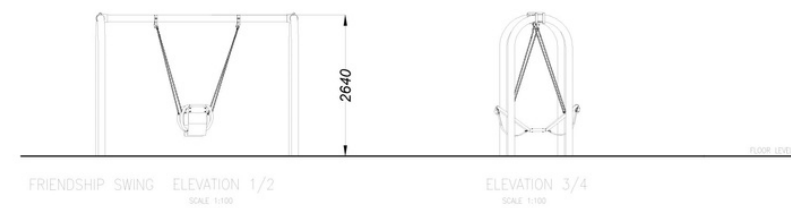
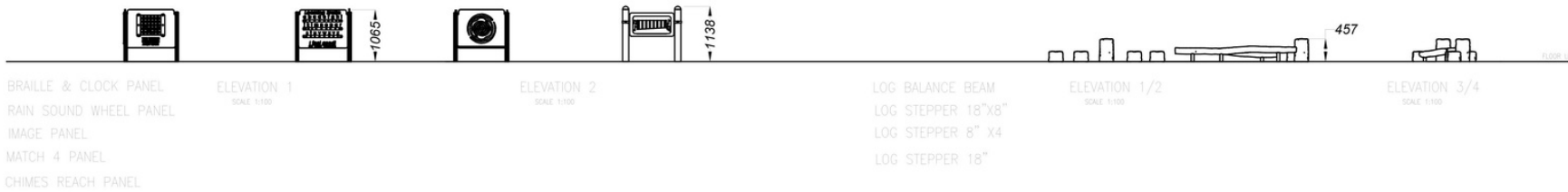
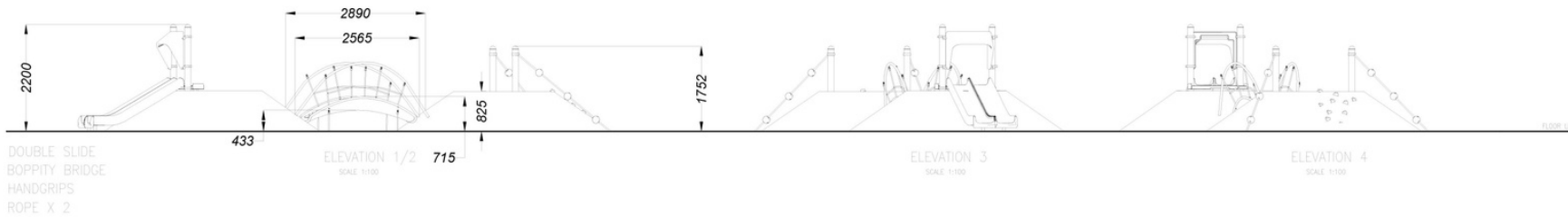
REV	DATE	DESCRIPTION

JOB TITLE
PROPOSED CHILDREN'S PLAYGROUND
AREA FOR NUH
AS - BUILT DRAWING

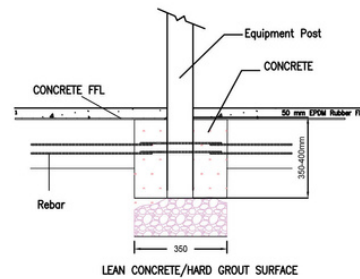
DRAWING TITLE
ISOMETRIC VIEW & ELEVATIONS
OF PLAY COMPONENTS

DRAWN: KH	SCALE: AS SHOWN
CHECKED BY: ZH	DATE: 21 AUG 2023
DRAWING NO. RM10594R01	REV. .
FILE NAME: RM10594R01.DWG	

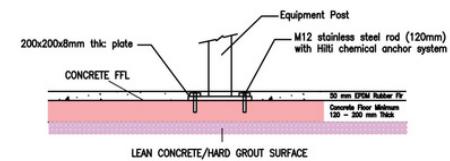
NOTE : PLEASE DOUBLE CLICK & MEASURE THE ACTUAL DIMENSIONS INSIDE OF THE BLOCK.



MOUNTING IN TYPICAL DIRECT BURY (DB)



MOUNTING IN TYPICAL SURFACE MOUNT (SM)



63 JALAN PEMIMPIN
#02-04 PEMIMPIN INDUSTRIAL BUILDING
SINGAPORE 577219
TEL: (65) 6254 2910 FAX: (65) 62542913

REV	DATE	DESCRIPTION

JOB TITLE
PROPOSED CHILDREN'S PLAYGROUND
AREA FOR NUH
AS - BUILT DRAWING
DRAWING TITLE
ISOMETRIC VIEW & ELEVATIONS
OF PLAY COMPONENTS

DRAWN: KH	SCALE: AS SHOWN
CHECKED BY: ZH	DATE: 21 AUG 2023
DRAWING NO. RM10594R8/2	REV. .
FILE NAME: RM10594R8.DWG	

NOTE : PLEASE DOUBLE CLICK & MEASURE THE ACTUAL DIMENSIONS INSIDE OF THE BLOCK.

Note: Design and requirement will vary according to actual on site condition.